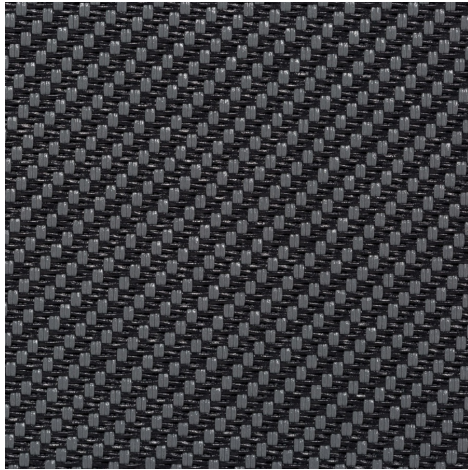
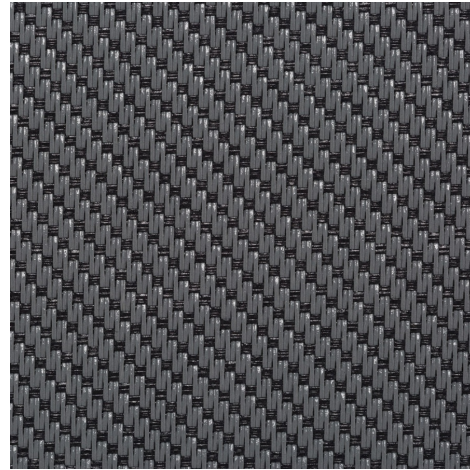


Serge 1% - grey | charcoal (001010)
Technical info
FRONT

BACK


Widths		270 cm 190 cm
Composition		Glassfibre 42% - PVC 58%
Openness factor	NBN EN 410	1.00%
Weight	NF EN 12127	620.00 g/m ²
Thickness	ISO 5084	0.80 mm
Density	ISO 7211/2	WARP 20.00 yarn/cm WEFT 18.00 yarn/cm
Color fastness to artificial light	ISO 105 B02	>7
Color fastness to artificial weathering	ISO 105 B04	>7
Air permeability	ISO 9237	497.00l/m ² /s
Roll length		30 m
Cleaning		With soapy water
Confection		By heat, high frequency or ultrasonic welding
Fire classification		
└ Europe	UNE-EN 13501-1:2007	C-s3, d0
└ France	NF P92-503	M1
└ Italy	UNI 9177	Class 1
└ Germany	DIN 4102	B1
└ UK	BS 5867	C
└ USA	NFPA 701	FR

Serge 1% - grey charcoal (001010)		Technical info	
Tear strength	ISO 4674-1 methode 2		
↳ Original		WARP 5.90 daN	WEFT 6.20 daN
↳ After climatic chamber -30°C		WARP 6.00 daN	WEFT 6.20 daN
↳ After climatic chamber +70°C		WARP 5.30 daN	WEFT 5.80 daN
Elongation up to break	ISO 1421		
↳ Original		WARP 4.70 %	WEFT 3.80 %
↳ After colour fastness to artificial weathering		WARP 4.70 %	WEFT 3.30 %
↳ After climatic chamber -30°C		WARP 4.80 %	WEFT 3.90 %
↳ After climatic chamber +70°C		WARP 5.00 %	WEFT 3.70 %
Breaking strength	ISO 1421		
↳ Original		WARP 321.00 daN/5cm	WEFT 277.00 daN/5cm
↳ After colour fastness to artificial weathering		WARP 225.00 daN/5cm	WEFT 216.00 daN/5cm
↳ After climatic chamber -30°C		WARP 236.00 daN/5cm	WEFT 279.00 daN/5cm
↳ After climatic chamber +70°C		WARP 251.00 daN/5cm	WEFT 266.00 daN/5cm

Front - Interior Serge 1% - grey | charcoal (001010)

Visual properties	
Tv = Visual light transmittance	1.20%
Tuv = UV transmittance	1.20%

Solar energetic properties	
As = Solar absorptance	88.30%
Rs = Solar reflectance	10.50%
Ts = Solar transmittance	1.20%

Fabric + glazing: G-factor				
	G	Te	Qi	SC
Glazing A	0.65	0.01	0.64	0.77
Glazing B	0.64	0.01	0.63	0.84
Glazing C	0.53	0.01	0.53	0.90
Glazing D	0.30	0.00	0.30	0.94

G = Total solar energy transmittance / Te = Direct solar transmittance / Qi = Secondary heat transfer factor / SC = Shading coefficient

Visual comfort		
Normal solar transmittance	Class 4	Very good effect
Glare control	Class 3	Good effect
Privacy night	Class 2	Moderate effect
Visual contact with the outside	Class 2	Moderate effect
Daylight utilisation	Class 0	Very little effect

Thermal comfort G-factor = Total solar energy transmittance			
Glazing A	Glazing B	Glazing C	Glazing D
Class 0	Class 0	Class 0	Class 2

Thermal comfort Qi-factor = Secondary heat transfer factor			
Glazing A	Glazing B	Glazing C	Glazing D
Class 0	Class 0	Class 0	Class 1

Class 0 = Very little effect / 1 = Little effect / 2 = Moderate effect / 3 = Good effect / 4 = Very good effect

Back - Interior Serge 1% - grey | charcoal (001010)

Visual properties	
Tv = Visual light transmittance	1.20%
Tuv = UV transmittance	1.20%

Solar energetic properties	
As = Solar absorptance	84.80%
Rs = Solar reflectance	14.00%
Ts = Solar transmittance	1.20%

Fabric + glazing: G-factor				
	G	Te	Qi	SC
Glazing A	0.65	0.01	0.64	0.77
Glazing B	0.64	0.01	0.63	0.84
Glazing C	0.53	0.01	0.53	0.90
Glazing D	0.30	0.00	0.30	0.94

G = Total solar energy transmittance / Te = Direct solar transmittance / Qi = Secondary heat transfer factor / SC = Shading coefficient

Visual comfort		
Normal solar transmittance	Class 4	Very good effect
Glare control	Class 3	Good effect
Privacy night	Class 2	Moderate effect
Visual contact with the outside	Class 2	Moderate effect
Daylight utilisation	Class 0	Very little effect

Thermal comfort G-factor = Total solar energy transmittance			
Glazing A	Glazing B	Glazing C	Glazing D
Class 0	Class 0	Class 0	Class 2

Thermal comfort Qi-factor = Secondary heat transfer factor			
Glazing A	Glazing B	Glazing C	Glazing D
Class 0	Class 0	Class 0	Class 1

Class 0 = Very little effect / 1 = Little effect / 2 = Moderate effect / 3 = Good effect / 4 = Very good effect

Front - Exterior Serge 1% - grey | charcoal (001010)

Visual properties	
Tv = Visual light transmittance	1.20%
Tuv = UV transmittance	1.20%

Solar energetic properties	
As = Solar absorptance	88.30%
Rs = Solar reflectance	10.50%
Ts = Solar transmittance	1.20%

Fabric + glazing: G-factor				
	G	Te	Qi	SC
Glazing A	0.20	0.01	0.19	0.23
Glazing B	0.15	0.01	0.14	0.19
Glazing C	0.09	0.01	0.08	0.15
Glazing D	0.08	0.00	0.07	0.24

G = Total solar energy transmittance / Te = Direct solar transmittance / Qi = Secondary heat transfer factor / SC = Shading coefficient

Visual comfort		
Normal solar transmittance	Class 4	Very good effect
Glare control	Class 3	Good effect
Privacy night	Class 2	Moderate effect
Visual contact with the outside	Class 2	Moderate effect
Daylight utilisation	Class 0	Very little effect

Thermal comfort G-factor = Total solar energy transmittance			
Glazing A	Glazing B	Glazing C	Glazing D
Class 2	Class 3	Class 4	Class 4

Thermal comfort Qi-factor = Secondary heat transfer factor			
Glazing A	Glazing B	Glazing C	Glazing D
Class 2	Class 2	Class 3	Class 3

Class 0 = Very little effect / 1 = Little effect / 2 = Moderate effect / 3 = Good effect / 4 = Very good effect

Back - Exterior

Serge 1% - grey | charcoal (001010)

Visual properties

Tv = Visual light transmittance	1.20%
Tuv = UV transmittance	1.20%

Solar energetic properties

As = Solar absorptance	84.80%
Rs = Solar reflectance	14.00%
Ts = Solar transmittance	1.20%

Fabric + glazing: G-factor

	G	Te	Qi	SC
Glazing A	0.20	0.01	0.19	0.23
Glazing B	0.15	0.01	0.14	0.19
Glazing C	0.09	0.01	0.08	0.15
Glazing D	0.08	0.00	0.07	0.24

G = Total solar energy transmittance / Te = Direct solar transmittance / Qi = Secondary heat transfer factor / SC = Shading coefficient

Visual comfort

Normal solar transmittance	Class 4	Very good effect
Glare control	Class 3	Good effect
Privacy night	Class 2	Moderate effect
Visual contact with the outside	Class 2	Moderate effect
Daylight utilisation	Class 0	Very little effect

Thermal comfort G-factor = Total solar energy transmittance

Glazing A	Glazing B	Glazing C	Glazing D
Class 2	Class 3	Class 4	Class 4

Thermal comfort Qi-factor = Secondary heat transfer factor

Glazing A	Glazing B	Glazing C	Glazing D
Class 2	Class 2	Class 3	Class 3

Class 0 = Very little effect / 1 = Little effect / 2 = Moderate effect / 3 = Good effect / 4 = Very good effect