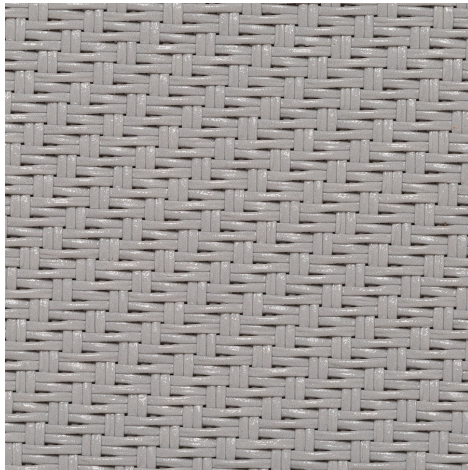


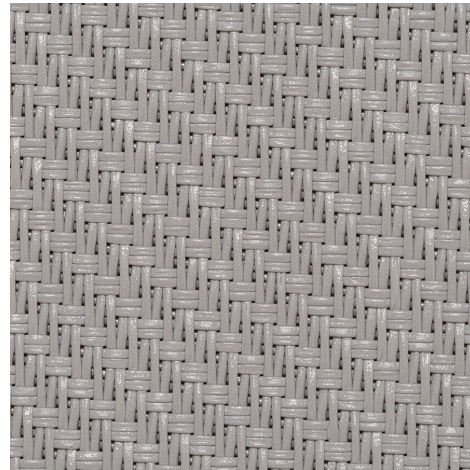
Serge 10% - pearl grey | pearl grey
(007007)

Technical info

FRONT



BACK



Widths		270 cm
Composition		Glassfibre 42% - PVC 58%
Openness factor	NBN EN 410	10.00%
Weight	NF EN 12127	490.00 g/m ²
Thickness	ISO 5084	0.83 mm
Density	ISO 2286-3	WARP 18.00 yarn/cm WEFT 12.00 yarn/cm
Color fastness to artificial light	ISO 105 B02	>7
Color fastness to artificial weathering	ISO 105 B04	>7
Roll length		50 m
Cleaning		With soapy water
Confection		By heat, high frequency or ultrasonic welding
Fire classification		
└ Europe	UNE-EN 13501-1:2007	
└ France	NF P92-503	M1
└ Italy	UNI 9177	Class 1
└ Germany	DIN 4102	B1
└ UK	BS 5867	C
└ USA	NFPA 701	FR

Serge 10% - pearl grey | pearl grey
(007007)

Technical info

Tear strength ISO 4674-1 method 2			
↳ Original		WARP 9.60 daN	WEFT 7.60 daN
↳ After climatic chamber -30°C		WARP 8.60 daN	WEFT 7.10 daN
↳ After climatic chamber +70°C		WARP 8.80 daN	WEFT 7.00 daN
Elongation up to break ISO 1421			
↳ Original		WARP 5.20 %	WEFT 4.90 %
↳ After colour fastness to artificial weathering		WARP 5.80 %	WEFT 5.00 %
↳ After color fastness to artificial light		WARP 6.70 %	WEFT 5.20 %
↳ After climatic chamber -30°C		WARP 5.00 %	WEFT 4.80 %
↳ After climatic chamber +70°C		WARP 4.80 %	WEFT 4.20 %
Breaking strength ISO 1421			
↳ Original		WARP 312.00 daN/5cm	WEFT 200.00 daN/5cm
↳ After colour fastness to artificial weathering		WARP 289.00 daN/5cm	WEFT 190.00 daN/5cm
↳ After color fastness to artificial light		WARP 289.00 daN/5cm	WEFT 185.00 daN/5cm
↳ After climatic chamber -30°C		WARP 271.00 daN/5cm	WEFT 174.00 daN/5cm
↳ After climatic chamber +70°C		WARP 217.00 daN/5cm	WEFT 139.00 daN/5cm

Front - Interior	Serge 10% - pearl grey pearl grey (007007)
-------------------------	--

Visual properties	
Tv = Visual light transmittance	14.70%
Tuv = UV transmittance	10.30%

Solar energetic properties	
As = Solar absorptance	42.90%
Rs = Solar reflectance	39.70%
Ts = Solar transmittance	17.40%

Fabric + glazing: G-factor				
	G	Te	Qi	SC
Glazing A	0.55	0.00	0.00	0.00
Glazing B	0.53	0.00	0.00	0.00
Glazing C	0.45	0.00	0.00	0.00
Glazing D	0.28	0.00	0.00	0.00

G = Total solar energy transmittance / Te = Direct solar transmittance / Qi = Secondary heat transfer factor / SC = Shading coefficient

Visual comfort		
Normal solar transmittance	Class 2	Moderate effect
Glare control	Class 2	Moderate effect
Privacy night	Class 6	
Visual contact with the outside	Class 2	Moderate effect
Daylight utilisation	Class 0	Very little effect

Back - Interior Serge 10% - pearl grey | pearl grey (007007)

Visual properties	
Tv = Visual light transmittance	14.70%
Tuv = UV transmittance	10.30%

Solar energetic properties	
As = Solar absorptance	40.70%
Rs = Solar reflectance	41.90%
Ts = Solar transmittance	17.40%

Fabric + glazing: G-factor				
	G	Te	Qi	SC
Glazing A	0.55	0.00	0.00	0.00
Glazing B	0.53	0.00	0.00	0.00
Glazing C	0.45	0.00	0.00	0.00
Glazing D	0.28	0.00	0.00	0.00

G = Total solar energy transmittance / Te = Direct solar transmittance / Qi = Secondary heat transfer factor / SC = Shading coefficient

Visual comfort		
Normal solar transmittance	Class 2	Moderate effect
Glare control	Class 2	Moderate effect
Privacy night	Class 6	
Visual contact with the outside	Class 2	Moderate effect
Daylight utilisation	Class 0	Very little effect

Front - Exterior	Serge 10% - pearl grey pearl grey (007007)
-------------------------	--

Visual properties	
Tv = Visual light transmittance	14.70%
Tuv = UV transmittance	10.30%

Solar energetic properties	
As = Solar absorptance	42.90%
Rs = Solar reflectance	39.70%
Ts = Solar transmittance	17.40%

Fabric + glazing: G-factor				
	G	Te	Qi	SC
Glazing A	0.29	0.00	0.00	0.00
Glazing B	0.25	0.00	0.00	0.00
Glazing C	0.17	0.00	0.00	0.00
Glazing D	0.13	0.00	0.00	0.00

G = Total solar energy transmittance / Te = Direct solar transmittance / Qi = Secondary heat transfer factor / SC = Shading coefficient

Visual comfort		
Normal solar transmittance	Class 2	Moderate effect
Glare control	Class 2	Moderate effect
Privacy night	Class 6	
Visual contact with the outside	Class 2	Moderate effect
Daylight utilisation	Class 0	Very little effect

Back - Exterior

Serge 10% - pearl grey | pearl grey (007007)

Visual properties

Tv = Visual light transmittance	14.70%
Tuv = UV transmittance	10.30%

Solar energetic properties

As = Solar absorptance	40.70%
Rs = Solar reflectance	41.90%
Ts = Solar transmittance	17.40%

Fabric + glazing: G-factor

	G	Te	Qi	SC
Glazing A	0.29	0.00	0.00	0.00
Glazing B	0.25	0.00	0.00	0.00
Glazing C	0.17	0.00	0.00	0.00
Glazing D	0.13	0.00	0.00	0.00

G = Total solar energy transmittance / Te = Direct solar transmittance / Qi = Secondary heat transfer factor / SC = Shading coefficient

Visual comfort

Normal solar transmittance	Class 2	Moderate effect
Glare control	Class 2	Moderate effect
Privacy night	Class 6	
Visual contact with the outside	Class 2	Moderate effect
Daylight utilisation	Class 0	Very little effect