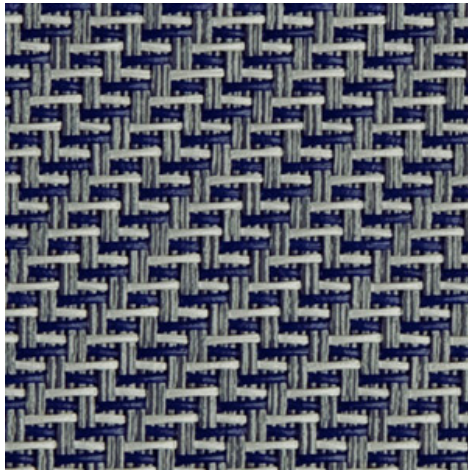


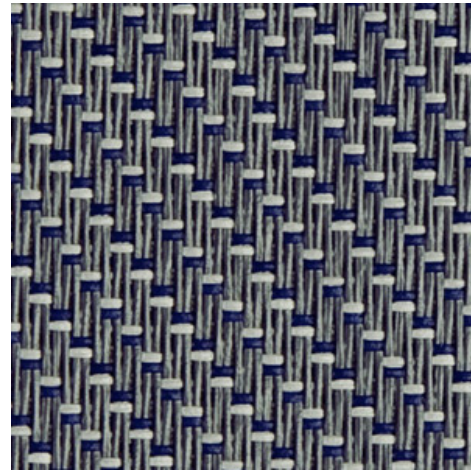
Serge 600 - grey | pearl grey-bleu azure
(001070)

Technical info

FRONT



BACK



Widths		160 cm 190 cm 220 cm 250 cm 270 cm 320 cm
Composition		Fibreglass 42% - PVC 58%
Openness factor	NBN EN 410	5.00%
Weight	NF EN 12127	525.00 g/m ²
Thickness	ISO 5084	0.74 mm
Density	ISO 7211/2	WARP 18.00 yarn/cm WEFT 14.00 yarn/cm
Color fastness to artificial light	ISO 105 B02	>7
Color fastness to artificial weathering	ISO 105 B04	>7
Air permeability	ISO 9237	580.00 l/m ² /s
Roll length		50 m / 30 m for all widths > 270 cm
Cleaning		With soapy water
Confection		By heat, high frequency or ultrasonic welding
Fire classification		
└ Europe	UNE-EN 13501-1:2007	C-s3, d0
└ France	NF P92-503	M1
└ Italy	UNI 9177	Class 1
└ Germany	DIN 4102	B1
└ UK	BS 5867	C
└ USA	NFPA 701	FR

Serge 600 - grey | pearl grey-bleu azure
(001070)

Technical info

Tear strength	ISO 4674-1 methode 2		
↳ Original		WARP 8.50 daN	WEFT 7.50 daN
↳ After climatic chamber -30°C		WARP 7.80 daN	WEFT 7.50 daN
↳ After climatic chamber +70°C		WARP 8.20 daN	WEFT 7.20 daN
Elongation up to break	ISO 1421		
↳ Original		WARP 3.10 %	WEFT 2.75 %
↳ After color fastness to artificial light		WARP 4.00 %	WEFT 2.90 %
↳ After colour fastness to artificial weathering		WARP 3.50 %	WEFT 2.80 %
↳ After climatic chamber -30°C		WARP 3.00 %	WEFT 2.50 %
↳ After climatic chamber +70°C		WARP 2.85 %	WEFT 2.50 %
Breaking strength	ISO 1421		
↳ Original		WARP 260.00 daN/5cm	WEFT 225.00 daN/5cm
↳ After color fastness to artificial light		WARP 240.00 daN/5cm	WEFT 220.00 daN/5cm
↳ After colour fastness to artificial weathering		WARP 240.00 daN/5cm	WEFT 225.00 daN/5cm
↳ After climatic chamber -30°C		WARP 225.00 daN/5cm	WEFT 200.00 daN/5cm
↳ After climatic chamber +70°C		WARP 180.00 daN/5cm	WEFT 185.00 daN/5cm

Front - Interior

 Serge 600 - grey | pearl grey-bleu azure
(001070)

Visual properties

Tv = Visual light transmittance	3.00%
Tuv = UV transmittance	2.90%

Solar energetic properties

As = Solar absorptance	73.40%
Rs = Solar reflectance	23.00%
Ts = Solar transmittance	3.60%

Fabric + glazing: G-factor

	G	Te	Qi	SC
Glazing A	0.58	0.03	0.55	0.69
Glazing B	0.58	0.03	0.55	0.76
Glazing C	0.49	0.02	0.47	0.84
Glazing D	0.29	0.01	0.28	0.90

G = Total solar energy transmittance / Te = Direct solar transmittance / Qi = Secondary heat transfer factor / SC = Shading coefficient

Visual comfort

Normal solar transmittance	Class 4	Very good effect
Glare control	Class 3	Good effect
Privacy night	Class 2	Moderate effect
Visual contact with the outside	Class 2	Moderate effect
Daylight utilisation	Class 1	Little effect

Thermal comfort G-factor = Total solar energy transmittance

Glazing A	Glazing B	Glazing C	Glazing D
Class 0	Class 0	Class 1	Class 2

Thermal comfort Qi-factor = Secondary heat transfer factor

Glazing A	Glazing B	Glazing C	Glazing D
Class 0	Class 0	Class 0	Class 1

Class 0 = Very little effect / 1 = Little effect / 2 = Moderate effect / 3 = Good effect / 4 = Very good effect

Back - Interior

 Serge 600 - grey | pearl grey-bleu azure
 (001070)

Visual properties

Tv = Visual light transmittance	3.00%
Tuv = UV transmittance	2.90%

Solar energetic properties

As = Solar absorptance	76.50%
Rs = Solar reflectance	19.80%
Ts = Solar transmittance	3.60%

Fabric + glazing: G-factor

	G	Te	Qi	SC
Glazing A	0.60	0.03	0.57	0.71
Glazing B	0.59	0.03	0.57	0.78
Glazing C	0.50	0.02	0.49	0.85
Glazing D	0.29	0.01	0.28	0.91

G = Total solar energy transmittance / Te = Direct solar transmittance / Qi = Secondary heat transfer factor / SC = Shading coefficient

Visual comfort

Normal solar transmittance	Class 4	Very good effect
Glare control	Class 3	Good effect
Privacy night	Class 2	Moderate effect
Visual contact with the outside	Class 2	Moderate effect
Daylight utilisation	Class 1	Little effect

Thermal comfort G-factor = Total solar energy transmittance

Glazing A	Glazing B	Glazing C	Glazing D
Class 0	Class 0	Class 0	Class 2

Thermal comfort Qi-factor = Secondary heat transfer factor

Glazing A	Glazing B	Glazing C	Glazing D
Class 0	Class 0	Class 0	Class 1

Class 0 = Very little effect / 1 = Little effect / 2 = Moderate effect / 3 = Good effect / 4 = Very good effect

Front - Exterior

 Serge 600 - grey | pearl grey-bleu azure
(001070)

Visual properties

Tv = Visual light transmittance	3.00%
Tuv = UV transmittance	2.90%

Solar energetic properties

As = Solar absorptance	73.40%
Rs = Solar reflectance	23.00%
Ts = Solar transmittance	3.60%

Fabric + glazing: G-factor

	G	Te	Qi	SC
Glazing A	0.19	0.03	0.16	0.22
Glazing B	0.14	0.03	0.12	0.19
Glazing C	0.11	0.02	0.07	0.15
Glazing D	0.08	0.01	0.07	0.24

G = Total solar energy transmittance / Te = Direct solar transmittance / Qi = Secondary heat transfer factor / SC = Shading coefficient

Thermal comfort G-factor = Total solar energy transmittance

Glazing A	Glazing B	Glazing C	Glazing D
Class 2	Class 3	Class 4	Class 4

Thermal comfort Qi-factor = Secondary heat transfer factor

Glazing A	Glazing B	Glazing C	Glazing D
Class 2	Class 2	Class 3	Class 3

Class 0 = Very little effect / 1 = Little effect / 2 = Moderate effect / 3 = Good effect / 4 = Very good effect

Back - Exterior

 Serge 600 - grey | pearl grey-bleu azure
(001070)

Visual properties

Tv = Visual light transmittance	3.00%
Tuv = UV transmittance	2.90%

Solar energetic properties

As = Solar absorptance	76.50%
Rs = Solar reflectance	19.80%
Ts = Solar transmittance	3.60%

Fabric + glazing: G-factor

	G	Te	Qi	SC
Glazing A	0.20	0.03	0.16	0.23
Glazing B	0.15	0.03	0.12	0.20
Glazing C	0.09	0.02	0.07	0.15
Glazing D	0.08	0.01	0.07	0.25

G = Total solar energy transmittance / Te = Direct solar transmittance / Qi = Secondary heat transfer factor / SC = Shading coefficient

Thermal comfort G-factor = Total solar energy transmittance

Glazing A	Glazing B	Glazing C	Glazing D
Class 2	Class 3	Class 4	Class 4

Thermal comfort Qi-factor = Secondary heat transfer factor

Glazing A	Glazing B	Glazing C	Glazing D
Class 2	Class 2	Class 3	Class 3

Class 0 = Very little effect / 1 = Little effect / 2 = Moderate effect / 3 = Good effect / 4 = Very good effect