

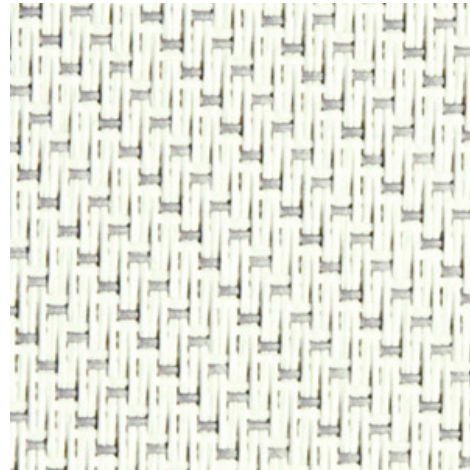
Serge 600 - white | white-pearl grey
(002061)

Technical info

FRONT



BACK



Widths		250 cm 270 cm 320 cm
Composition		Fibreglass 42% - PVC 58%
Openness factor	NBN EN 410	5.00%
Weight	NF EN 12127	525.00 g/m ²
Thickness	ISO 5084	0.74 mm
Density	ISO 7211/2	WARP 18.00 yarn/cm WEFT 14.00 yarn/cm
Color fastness to artificial light	ISO 105 B02	>7
Color fastness to artificial weathering	ISO 105 B04	>7
Air permeability	ISO 9237	580.00 l/m ² /s
Roll length		50 m / 30 m for all widths > 270 cm
Cleaning		With soapy water
Confection		By heat, high frequency or ultrasonic welding
Fire classification		
└ Europe	UNE-EN 13501-1:2007	C-s3, d0
└ France	NF P92-503	M1
└ Italy	UNI 9177	Class 1
└ Germany	DIN 4102	B1
└ UK	BS 5867	C
└ USA	NFPA 701	FR

Serge 600 - white | white-pearl grey
(002061)

Technical info

Tear strength		ISO 4674-1 methode 2	
↳ Original	WARP	8.50 daN	WEFT 7.50 daN
↳ After climatic chamber -30°C	WARP	7.80 daN	WEFT 7.50 daN
↳ After climatic chamber +70°C	WARP	8.20 daN	WEFT 7.20 daN
Elongation up to break		ISO 1421	
↳ Original	WARP	3.10 %	WEFT 2.75 %
↳ After color fastness to artificial light	WARP	4.00 %	WEFT 2.90 %
↳ After colour fastness to artificial weathering	WARP	3.50 %	WEFT 2.80 %
↳ After climatic chamber -30°C	WARP	3.00 %	WEFT 2.50 %
↳ After climatic chamber +70°C	WARP	2.85 %	WEFT 2.50 %
Breaking strength		ISO 1421	
↳ Original	WARP	260.00 daN/5cm	WEFT 225.00 daN/5cm
↳ After color fastness to artificial light	WARP	240.00 daN/5cm	WEFT 220.00 daN/5cm
↳ After colour fastness to artificial weathering	WARP	240.00 daN/5cm	WEFT 225.00 daN/5cm
↳ After climatic chamber -30°C	WARP	225.00 daN/5cm	WEFT 200.00 daN/5cm
↳ After climatic chamber +70°C	WARP	180.00 daN/5cm	WEFT 185.00 daN/5cm

Front - Interior Serge 600 - white | white-pearl grey (002061)

Visual properties	
Tv = Visual light transmittance	11.60%
Tuv = UV transmittance	3.40%

Solar energetic properties	
As = Solar absorptance	27.70%
Rs = Solar reflectance	59.80%
Ts = Solar transmittance	12.40%

Fabric + glazing: G-factor				
	G	Te	Qi	SC
Glazing A	0.38	0.11	0.27	0.45
Glazing B	0.40	0.09	0.30	0.52
Glazing C	0.38	0.07	0.30	0.64
Glazing D	0.26	0.04	0.21	0.80

G = Total solar energy transmittance / Te = Direct solar transmittance / Qi = Secondary heat transfer factor / SC = Shading coefficient

Visual comfort		
Normal solar transmittance	Class 4	Very good effect
Glare control	Class 1	Little effect
Privacy night	Class 2	Moderate effect
Visual contact with the outside	Class 1	Little effect
Daylight utilisation	Class 1	Little effect

Thermal comfort G-factor = Total solar energy transmittance			
Glazing A	Glazing B	Glazing C	Glazing D
Class 1	Class 1	Class 1	Class 2

Thermal comfort Qi-factor = Secondary heat transfer factor			
Glazing A	Glazing B	Glazing C	Glazing D
Class 1	Class 0	Class 0	Class 1

Class 0 = Very little effect / 1 = Little effect / 2 = Moderate effect / 3 = Good effect / 4 = Very good effect

Back - Interior

Serge 600 - white | white-pearl grey (002061)

Visual properties

Tv = Visual light transmittance	11.60%
Tuv = UV transmittance	3.40%

Solar energetic properties

As = Solar absorptance	23.40%
Rs = Solar reflectance	64.20%
Ts = Solar transmittance	12.40%

Fabric + glazing: G-factor

	G	Te	Qi	SC
Glazing A	0.35	0.11	0.25	0.42
Glazing B	0.37	0.09	0.28	0.49
Glazing C	0.36	0.07	0.29	0.61
Glazing D	0.25	0.04	0.21	0.79

G = Total solar energy transmittance / Te = Direct solar transmittance / Qi = Secondary heat transfer factor / SC = Shading coefficient

Visual comfort

Normal solar transmittance	Class 4	Very good effect
Glare control	Class 1	Little effect
Privacy night	Class 2	Moderate effect
Visual contact with the outside	Class 1	Little effect
Daylight utilisation	Class 1	Little effect

Thermal comfort G-factor = Total solar energy transmittance

Glazing A	Glazing B	Glazing C	Glazing D
Class 1	Class 1	Class 1	Class 2

Thermal comfort Qi-factor = Secondary heat transfer factor

Glazing A	Glazing B	Glazing C	Glazing D
Class 1	Class 1	Class 1	Class 1

Class 0 = Very little effect / 1 = Little effect / 2 = Moderate effect / 3 = Good effect / 4 = Very good effect

Front - Exterior	Serge 600 - white white-pearl grey (002061)
-------------------------	---

Visual properties	
Tv = Visual light transmittance	11.60%
Tuv = UV transmittance	3.40%

Solar energetic properties	
As = Solar absorptance	27.70%
Rs = Solar reflectance	59.80%
Ts = Solar transmittance	12.40%

Fabric + glazing: G-factor				
	G	Te	Qi	SC
Glazing A	0.17	0.11	0.06	0.20
Glazing B	0.15	0.09	0.05	0.19
Glazing C	0.11	0.07	0.03	0.18
Glazing D	0.08	0.04	0.04	0.24

G = Total solar energy transmittance / Te = Direct solar transmittance / Qi = Secondary heat transfer factor / SC = Shading coefficient

Thermal comfort G-factor = Total solar energy transmittance			
Glazing A	Glazing B	Glazing C	Glazing D
Class 2	Class 3	Class 3	Class 4

Thermal comfort Qi-factor = Secondary heat transfer factor			
Glazing A	Glazing B	Glazing C	Glazing D
Class 3	Class 3	Class 3	Class 3

Class 0 = Very little effect / 1 = Little effect / 2 = Moderate effect / 3 = Good effect / 4 = Very good effect

Back - Exterior

Serge 600 - white | white-pearl grey (002061)

Visual properties

Tv = Visual light transmittance	11.60%
Tuv = UV transmittance	3.40%

Solar energetic properties

As = Solar absorptance	23.40%
Rs = Solar reflectance	64.20%
Ts = Solar transmittance	12.40%

Fabric + glazing: G-factor

	G	Te	Qi	SC
Glazing A	0.16	0.11	0.05	0.19
Glazing B	0.14	0.09	0.05	0.18
Glazing C	0.10	0.07	0.03	0.17
Glazing D	0.07	0.04	0.03	0.23

G = Total solar energy transmittance / Te = Direct solar transmittance / Qi = Secondary heat transfer factor / SC = Shading coefficient

Thermal comfort G-factor = Total solar energy transmittance

Glazing A	Glazing B	Glazing C	Glazing D
Class 2	Class 3	Class 3	Class 4

Thermal comfort Qi-factor = Secondary heat transfer factor

Glazing A	Glazing B	Glazing C	Glazing D
Class 3	Class 3	Class 4	Class 3

Class 0 = Very little effect / 1 = Little effect / 2 = Moderate effect / 3 = Good effect / 4 = Very good effect